



SmartBright LED Downlight

DN029B G2 LED8/865 PSR-E D90 GM

SmartBright LED Downlight, 7.5 W, 800 lm, 6500 K, Beam angle 100°, White

When switching from conventional CFL to LED lighting, most customers want a green solution with an attractive total cost of ownership. SmartBright LED Downlight is characterized by low cost and high efficiency, providing the end-user with the perfect green light fixture.

Product data

General Information	
Light source replaceable	No
Number of gear units	1 unit
Driver included	Yes
Lighting Technology	LED
Warranty period	1 years

Light Technical	
Luminous Flux	800 lm
Correlated Color Temperature (Nom)	6500 K
Luminous Efficacy (rated) (Nom)	106 lm/W
Color rendering index (CRI)	80
Light source color	865 cool daylight
Optic type	Beam angle 100°
Luminaire light beam spread	100°

Operating and Electrical	
Input Voltage	220 to 240 V
Line Frequency	50 or 60 Hz
Input Frequency	50 or 60 Hz
Inrush current	0.8 A
Inrush time	0.12 ms
Power Consumption	7.5 W
Power Factor (Fraction)	0.5
Connection	Flying leads/wires
Cable	Cable without plug
Number of products on MCB of 16 A type B	490
Suitable for random switching	Not applicable
Protection class IEC	Safety class II

Controls and Dimming	
Dimmable	Yes
Constant light output	No

SmartBright LED Downlight

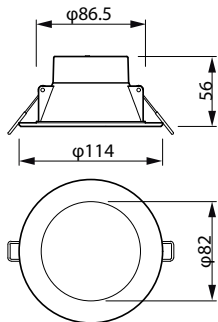
Maximum dim level	10% (depends on dimmer, ELV)
Mechanical and Housing	
Housing Material	Metal-Plastic
Reflector material	-
Optic material	Polycarbonate
Optical cover material	Polycarbonate
Fixation material	Stainless steel
Housing Color	White
Optical cover finish	Frosted
Overall height	56 mm
Overall diameter	114 mm
Ingress protection code	IP40/54 [Finger-protected; dust accumulation-protected, splash-proof]
Mech. impact protection code	IK03 [0.3 J]
Net Weight (Piece)	0.230 kg
Approval and Application	
Glow-wire test	Temperature 750 °C, duration 5 s
Flammability mark	For mounting on normally flammable surfaces
EU RoHS compliant	Yes
Ambient temperature range	-20 to +40 °C

Initial Performance (IEC Compliant)	
Luminous flux tolerance	-10% / +20%
Initial chromaticity	(6500K@, 0.3130, 0.3370) 6
Power consumption tolerance	+/-10%

Over Time Performance (IEC Compliant)	
Driver failure rate at 5000 h	1.6 %
Median useful life L70B50	20,000 hour(s)

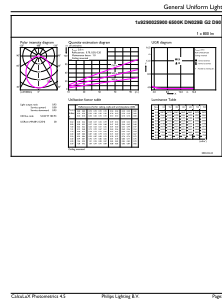
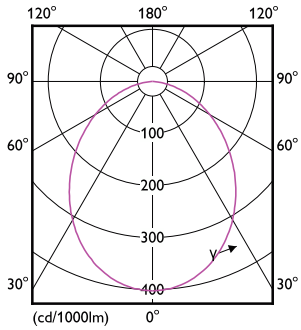
Product Data	
Order product name	DN029B G2 LED8/865 PSR-E D90 GM
Full product name	DN029B G2 LED8/865 PSR-E D90 GM
Full product code	87195142767200
Order code	929002590008
Material Nr. (12NC)	929002590008
Numerator - Quantity Per Pack	1
EAN/UPC - Product/Case	8719514276772
Numerator - Packs per outer box	12
EAN/UPC - Case	8719514276789

Dimensional drawing



SmartBright LED Downlight

Photometric data



Light Distribution Diagram - DN029B G2 LED8/865 PSR-E D90 GM

General uniform lighting - DN029B G2 LED8/865 PSR-E D90 GM

