



# SmartBright LED Downlight

## DN029B G2 LED12/CCT PSR-E D150 GM

SmartBright LED Downlight, 10.5 W, 1200 lm, 3000 K, Beam angle 100°, White

When switching from conventional CFL to LED lighting, most customers want a green solution with an attractive total cost of ownership. SmartBright LED Downlight is characterized by low cost and high efficiency, providing the end-user with the perfect green light fixture.

### Product data

General Information		Optic type	
Light source replaceable	No	Beam angle	100°
Number of gear units	1 unit	Luminaire light beam spread	100°
Driver included	Yes	<b>Operating and Electrical</b>	
Lighting Technology	LED	Input Voltage	220 to 240 V
Warranty period	3 years	Line Frequency	50 or 60 Hz
<b>Light Technical</b>		Input Frequency	50 or 60 Hz
Luminous Flux	1,200 lm	Inrush current	1.28 A
Correlated Color Temperature (Nom)	3000 K	Inrush time	0.041 ms
Luminous Efficacy (rated) (Nom)	114 lm/W	Power Consumption	10.5 W
Color rendering index (CRI)	80	Power Factor (Fraction)	0.8
Light source color	3000/4000/6500	Connection	Flying leads/wires
		Cable	Cable without plug
		Number of products on MCB of 16 A type B	256

# SmartBright LED Downlight

Suitable for random switching	Not applicable
Protection class IEC	Safety class II

## Controls and Dimming

Dimmable	Yes
Constant light output	No
Maximum dim level	10% (depends on dimmer, ELV)

## Mechanical and Housing

Housing Material	Metal-Plastic
Reflector material	-
Optic material	Polycarbonate
Optical cover material	Polycarbonate
Fixation material	Stainless steel
Housing Color	White
Optical cover finish	Frosted
Overall height	61 mm
Overall diameter	190 mm
Ingress protection code	IP40/54 [Finger-protected; dust accumulation-protected, splash-proof]
Mech. impact protection code	IK03 [0.3 J]
Net Weight (Piece)	0.420 kg

## Approval and Application

Glow-wire test	Temperature 750 °C, duration 5 s
Flammability mark	For mounting on normally flammable surfaces
EU RoHS compliant	Yes
Ambient temperature range	-20 to +40 °C

## Initial Performance (IEC Compliant)

Luminous flux tolerance	3000K: ±10%;4000K: -10% / +20%;6500K: -10% / +20%
Initial chromaticity	(3000K@, 0.4400, 0.40304000K@0.37600,36566500K@0.31300,3370) 6
Power consumption tolerance	+/-10%

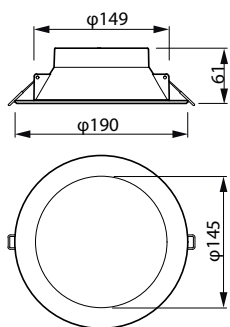
## Over Time Performance (IEC Compliant)

Driver failure rate at 5000 h	1.2 %
Median useful life L70B50	30,000 hour(s)

## Product Data

Order product name	DN029B G2 LED12/CCT PSR-E D150 GM
Full product name	DN029B G2 LED12/CCT PSR-E D150 GM
Full product code	871951427360300
Order code	929002576608
Material Nr. (12NC)	929002576608
Numerator - Quantity Per Pack	1
EAN/UPC - Product/Case	8719514273603
Numerator - Packs per outer box	6
EAN/UPC - Case	8719514273610

## Dimensional drawing



## SmartBright LED Downlight

