



LuxSpace surface-mounted – high efficiency, visual comfort and a stylish design

LuxSpace, surface mounted

Customers are looking to optimize all their resources, and that means not just their running costs (energy, etc.) but also their human resources. Energy savings are therefore a priority, but they must not have an adverse effect on the well-being of employees, who need a pleasant environment in order to be more productive, or on customers, who want to enjoy their shopping experience. LuxSpace provides the perfect combination of efficiency, light comfort and design, without compromising on lighting performance (color rendering and color uniformity). It offers a wide choice of options for creating the desired ambience, no matter the application.

Benefits

- Product which delivers visual comfort and stylish design
- Creates a gentle, natural light, ensuring visual comfort

Features

- Choice of four optics: high-gloss, faceted, matt and white
- Heights: deep (up to UGR 19), low (up to UGR 22)
- Light color: 830, 840, 927, 930 and 940 (CRI90 versions upon request)
- Colors: high-gloss metalized, white (RAL9003), grey (RAL9006), black (RAL9004) as standard (any other RAL color possible upon request)
- Compliant for central emergency lighting with DC (upon request)
- 3C track and pendant version (upon request)

LuxSpace, surface mounted

Application

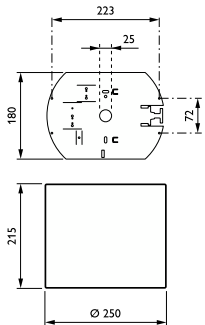
- Offices
- Retail
- Hospitals
- Hotels
- Airports

Versions



LuxSpace surface mounted-DN570C D250

Dimensional drawing



LuxSpace, surface mounted

General Information	
CE mark	Yes
Driver included	Yes
ENEC mark	ENEC mark
Flammability mark	For mounting on normally flammable surfaces
Glow-wire test	Temperature 850 °C, duration 5 s
Light source replaceable	No
Number of gear units	1 unit
Service tag	Yes
Light Technical	
Color rendering index (CRI)	>80
Optic type	-
Operating and Electrical	
Input Voltage	220 to 240 V
Line Frequency	50 to 60 Hz
Temperature	
Ambient temperature range	+10 to +25 °C
Mechanical and Housing	
Housing Color	White
Approval and Application	
Protection class IEC	Safety class I
Mech. impact protection code	IK02
Ingress protection code	IP20
Initial Performance (IEC Compliant)	
Luminous flux tolerance	+/-10%
Application Conditions	
Suitable for random switching	Yes

General Information

Order Code	Full Product Name	Product family code
910505100959	DN570C LED20S/830 PSU-E C WH	DN570C
910505100960	DN570C LED20S/840 PSU-E C WH	DN570C
910505100961	DN571C LED20S/830 PSU-E C WH	DN571C
910505100962	DN571C LED20S/840 PSU-E C WH	DN571C
910505100963	DN570C LED20S/830 DIA-VLC-E C WH	DN570C
910505100964	DN570C LED20S/840 DIA-VLC-E C WH	DN570C
910505100965	DN571C LED20S/830 DIA-VLC-E C WH	DN571C
910505100966	DN571C LED20S/840 DIA-VLC-E C WH	DN571C
910505100967	DN570C LED24S/830 PSU-E C WH	DN570C
910505100968	DN570C LED24S/840 PSU-E C WH	DN570C
910505100969	DN570C LED24S/830 DIA-VLC-E C WH	DN570C
910505100970	DN570C LED24S/840 DIA-VLC-E C WH	DN570C
910505100971	DN571C LED24S/830 DIA-VLC-E C WH	DN571C
910505100972	DN571C LED24S/840 DIA-VLC-E C WH	DN571C
910505100973	DN570C LED40S/830 PSU-E C WH	DN570C
910505100974	DN570C LED40S/840 PSU-E C WH	DN570C
910505100975	DN570C LED40S/830 DIA-VLC-E C WH	DN570C
910505100976	DN570C LED40S/840 DIA-VLC-E C WH	DN570C

Light Technical

Order Code	Full Product Name	Correlated		
		Color Temperature (Nom)	Luminous Efficacy (rated) (Nom)	Luminous Flux
910505100959	DN570C LED20S/830 PSU-E C WH	3000 K	134 lm/W	2,200 lm
910505100960	DN570C LED20S/840 PSU-E C WH	4000 K	149 lm/W	2,200 lm
910505100961	DN571C LED20S/830 PSU-E C WH	3000 K	134 lm/W	2,200 lm
910505100962	DN571C LED20S/840 PSU-E C WH	4000 K	149 lm/W	2,200 lm

Order Code	Full Product Name	Correlated		
		Color Temperature (Nom)	Luminous Efficacy (rated) (Nom)	Luminous Flux
910505100963	DN570C LED20S/830 DIA-VLC-E C WH	3000 K	134 lm/W	2,200 lm
910505100964	DN570C LED20S/840 DIA-VLC-E C WH	4000 K	149 lm/W	2,200 lm
910505100965	DN571C LED20S/830 DIA-VLC-E C WH	3000 K	134 lm/W	2,200 lm
910505100966	DN571C LED20S/840 DIA-VLC-E C WH	4000 K	149 lm/W	2,200 lm

LuxSpace, surface mounted

Order Code	Full Product Name	Correlated	Luminous	Luminous Flux
		Color Temperature (Nom)	Efficacy (rated) (Nom)	
910505100967	DN570C LED24S/830 PSU-E C WH	3000 K	130 lm/W	2,600 lm
910505100968	DN570C LED24S/840 PSU-E C WH	4000 K	141 lm/W	2,600 lm
910505100969	DN570C LED24S/830 DIA-VLC-E C WH	3000 K	130 lm/W	2,600 lm
910505100970	DN570C LED24S/840 DIA-VLC-E C WH	4000 K	141 lm/W	2,600 lm
910505100971	DN571C LED24S/830 DIA-VLC-E C WH	3000 K	130 lm/W	2,600 lm
910505100972	DN571C LED24S/840 DIA-VLC-E C WH	4000 K	141 lm/W	2,600 lm

Order Code	Full Product Name	Correlated	Luminous	Luminous Flux
		Color Temperature (Nom)	Efficacy (rated) (Nom)	
910505100973	DN570C LED40S/830 PSU-E C WH	3000 K	133 lm/W	4,400 lm
910505100974	DN570C LED40S/840 PSU-E C WH	4000 K	147 lm/W	4,400 lm
910505100975	DN570C LED40S/830 DIA-VLC-E C WH	3000 K	133 lm/W	4,400 lm
910505100976	DN570C LED40S/840 DIA-VLC-E C WH	4000 K	147 lm/W	4,400 lm

Operating and Electrical

Order Code	Full Product Name	Power Consumption
910505100959	DN570C LED20S/830 PSU-E C WH	16.4 W
910505100960	DN570C LED20S/840 PSU-E C WH	14.8 W
910505100961	DN571C LED20S/830 PSU-E C WH	16.4 W
910505100962	DN571C LED20S/840 PSU-E C WH	14.8 W
910505100963	DN570C LED20S/830 DIA-VLC-E C WH	16.4 W
910505100964	DN570C LED20S/840 DIA-VLC-E C WH	14.8 W
910505100965	DN571C LED20S/830 DIA-VLC-E C WH	16.4 W
910505100966	DN571C LED20S/840 DIA-VLC-E C WH	14.8 W
910505100967	DN570C LED24S/830 PSU-E C WH	20 W

Order Code	Full Product Name	Power Consumption
910505100968	DN570C LED24S/840 PSU-E C WH	18.4 W
910505100969	DN570C LED24S/830 DIA-VLC-E C WH	20 W
910505100970	DN570C LED24S/840 DIA-VLC-E C WH	18.4 W
910505100971	DN571C LED24S/830 DIA-VLC-E C WH	20 W
910505100972	DN571C LED24S/840 DIA-VLC-E C WH	18.4 W
910505100973	DN570C LED40S/830 PSU-E C WH	33 W
910505100974	DN570C LED40S/840 PSU-E C WH	30 W
910505100975	DN570C LED40S/830 DIA-VLC-E C WH	33 W
910505100976	DN570C LED40S/840 DIA-VLC-E C WH	30 W

Controls and Dimming

Order Code	Full Product Name	Dimmable
910505100959	DN570C LED20S/830 PSU-E C WH	No
910505100960	DN570C LED20S/840 PSU-E C WH	No
910505100961	DN571C LED20S/830 PSU-E C WH	No
910505100962	DN571C LED20S/840 PSU-E C WH	No
910505100963	DN570C LED20S/830 DIA-VLC-E C WH	Yes
910505100964	DN570C LED20S/840 DIA-VLC-E C WH	Yes
910505100965	DN571C LED20S/830 DIA-VLC-E C WH	Yes
910505100966	DN571C LED20S/840 DIA-VLC-E C WH	Yes
910505100967	DN570C LED24S/830 PSU-E C WH	No

Order Code	Full Product Name	Dimmable
910505100968	DN570C LED24S/840 PSU-E C WH	No
910505100969	DN570C LED24S/830 DIA-VLC-E C WH	Yes
910505100970	DN570C LED24S/840 DIA-VLC-E C WH	Yes
910505100971	DN571C LED24S/830 DIA-VLC-E C WH	Yes
910505100972	DN571C LED24S/840 DIA-VLC-E C WH	Yes
910505100973	DN570C LED40S/830 PSU-E C WH	No
910505100974	DN570C LED40S/840 PSU-E C WH	No
910505100975	DN570C LED40S/830 DIA-VLC-E C WH	Yes
910505100976	DN570C LED40S/840 DIA-VLC-E C WH	Yes

Initial Performance (IEC Compliant)

Order Code	Full Product Name	Initial chromaticity
910505100959	DN570C LED20S/830 PSU-E C WH	(0.43, 0.40) SDCM <2
910505100960	DN570C LED20S/840 PSU-E C WH	(0.38, 0.38) SDCM <2
910505100961	DN571C LED20S/830 PSU-E C WH	(0.43, 0.40) SDCM <2
910505100962	DN571C LED20S/840 PSU-E C WH	(0.38, 0.38) SDCM <2
910505100963	DN570C LED20S/830 DIA-VLC-E C WH	(0.43, 0.40) SDCM <2
910505100964	DN570C LED20S/840 DIA-VLC-E C WH	(0.38, 0.38) SDCM <2

Order Code	Full Product Name	Initial chromaticity
910505100965	DN571C LED20S/830 DIA-VLC-E C WH	(0.43, 0.40) SDCM <2
910505100966	DN571C LED20S/840 DIA-VLC-E C WH	(0.38, 0.38) SDCM <2
910505100967	DN570C LED24S/830 PSU-E C WH	(0.43, 0.40) SDCM <2
910505100968	DN570C LED24S/840 PSU-E C WH	(0.38, 0.38) SDCM <2
910505100969	DN570C LED24S/830 DIA-VLC-E C WH	(0.43, 0.40) SDCM <2
910505100970	DN570C LED24S/840 DIA-VLC-E C WH	(0.38, 0.38) SDCM <2

LuxSpace, surface mounted

Order Code	Full Product Name	Initial chromaticity
910505100971	DN571C LED24S/830 DIA-VLC-E C WH	(0.43, 0.40) SDCM <2
910505100972	DN571C LED24S/840 DIA-VLC-E C WH	(0.38, 0.38) SDCM <2
910505100973	DN570C LED40S/830 PSU-E C WH	(0.43, 0.40) SDCM <2

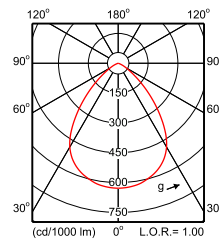
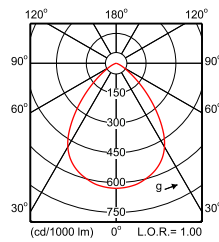
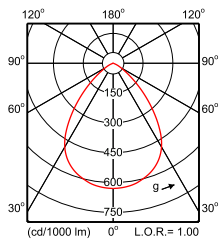
Order Code	Full Product Name	Initial chromaticity
910505100974	DN570C LED40S/840 PSU-E C WH	(0.38, 0.38) SDCM <2
910505100975	DN570C LED40S/830 DIA-VLC-E C WH	(0.43, 0.40) SDCM <2
910505100976	DN570C LED40S/840 DIA-VLC-E C WH	(0.38, 0.38) SDCM <2

Application Conditions

Order Code	Full Product Name	Maximum dim level
910505100959	DN570C LED20S/830 PSU-E C WH	-
910505100960	DN570C LED20S/840 PSU-E C WH	-
910505100961	DN571C LED20S/830 PSU-E C WH	-
910505100962	DN571C LED20S/840 PSU-E C WH	-
910505100963	DN570C LED20S/830 DIA-VLC-E C WH	1%
910505100964	DN570C LED20S/840 DIA-VLC-E C WH	1%
910505100965	DN571C LED20S/830 DIA-VLC-E C WH	1%
910505100966	DN571C LED20S/840 DIA-VLC-E C WH	1%
910505100967	DN570C LED24S/830 PSU-E C WH	-

Order Code	Full Product Name	Maximum dim level
910505100968	DN570C LED24S/840 PSU-E C WH	-
910505100969	DN570C LED24S/830 DIA-VLC-E C WH	1%
910505100970	DN570C LED24S/840 DIA-VLC-E C WH	1%
910505100971	DN571C LED24S/830 DIA-VLC-E C WH	1%
910505100972	DN571C LED24S/840 DIA-VLC-E C WH	1%
910505100973	DN570C LED40S/830 PSU-E C WH	-
910505100974	DN570C LED40S/840 PSU-E C WH	-
910505100975	DN570C LED40S/830 DIA-VLC-E C WH	1%
910505100976	DN570C LED40S/840 DIA-VLC-E C WH	1%

Polar Wide Diagrams



IFPS_DN570C PSE-E 1xLED20S/830 C-Polar
Normal (separate)

IFPS_DN570C PSE-E 1xLED20S/840 C-Polar
Normal (separate)

IFPS_DN570C PSE-E 1xLED24S/840 C-Polar
Normal (separate)

